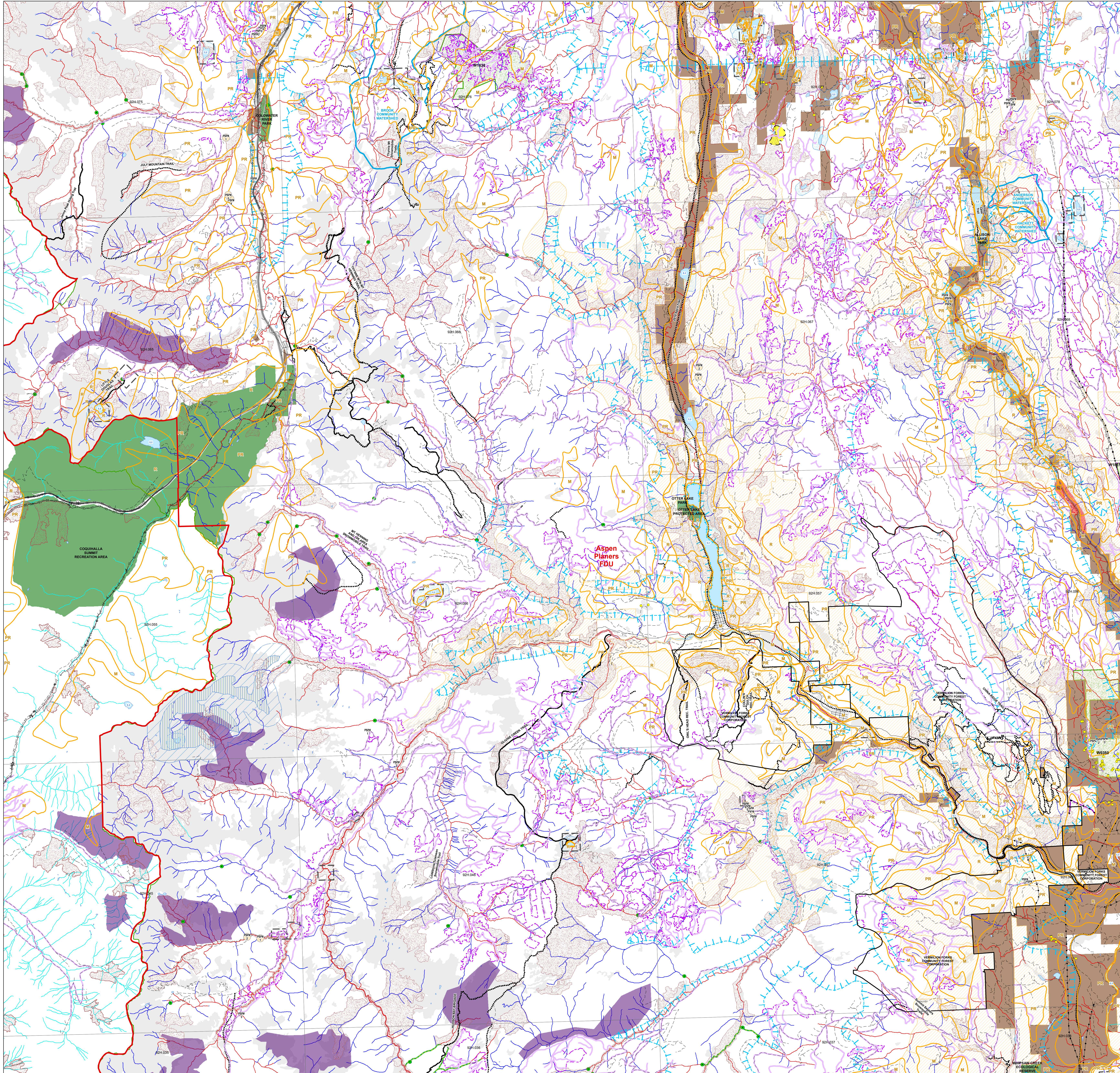




**Aspen Planners Ltd.**  
**FSP#**  
**Forest Stewardship Plan**

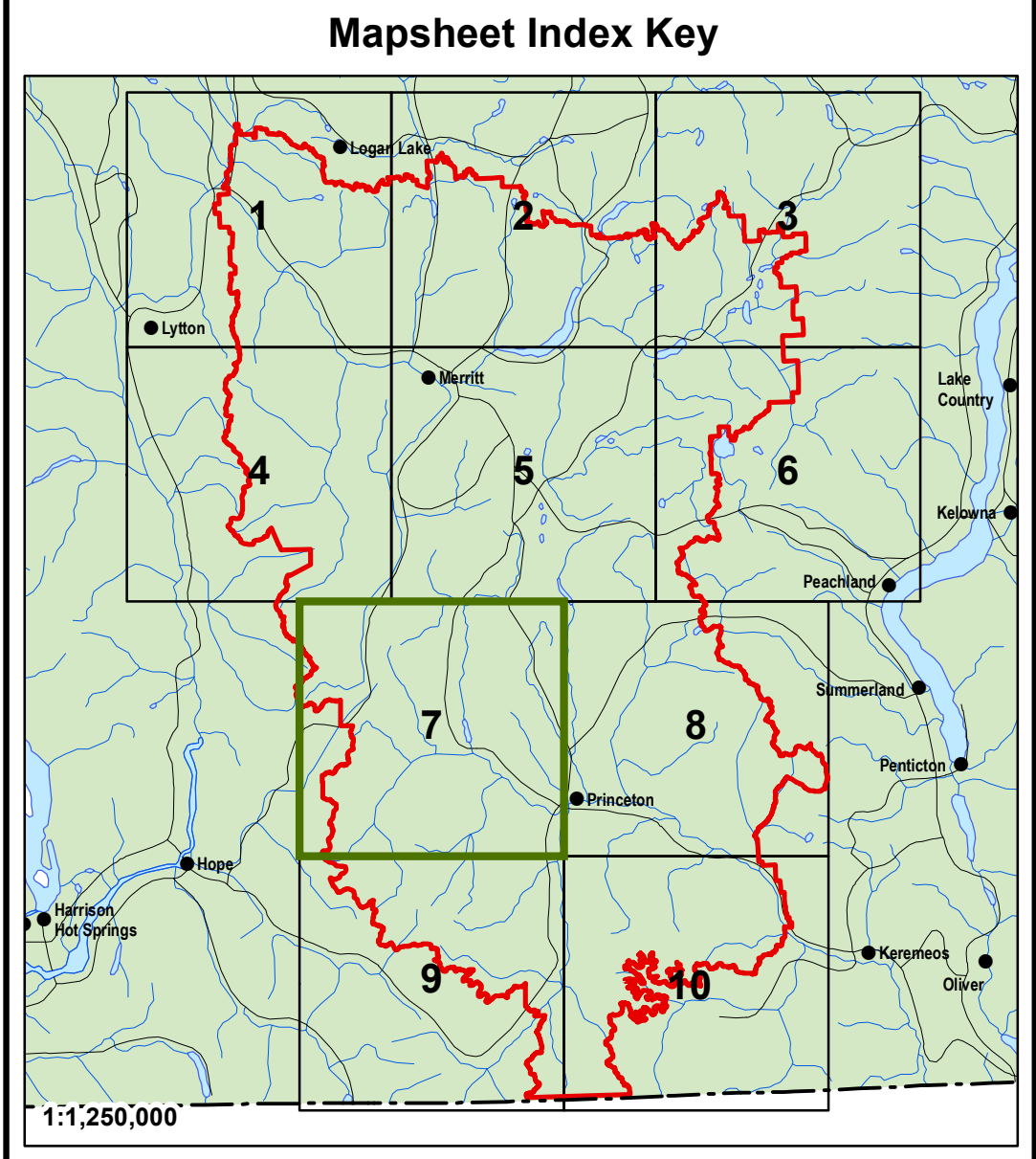
Map 7 of 10



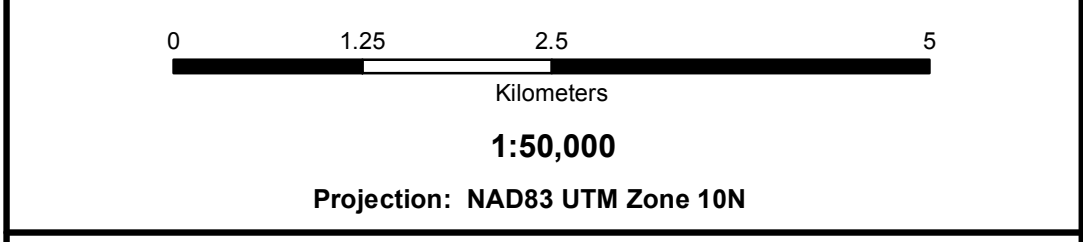
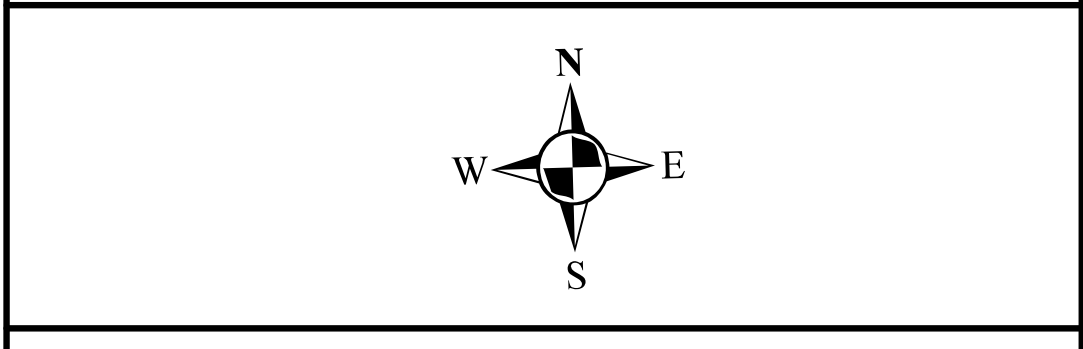
**Legend**

<b>Forest Development Unit (FDU)</b>	Visual Management
Cutting Permits	Visual Program
Active Road Permits	WDD
Built Road (paved 2 lanes)	Visual Management
Built Road (paved 1 lane)	Visual Management
Built Road (gravel)	Visual Management
<b>Land Management</b>	<b>Wildlife Habitat Areas</b>
Private Lands	Spotted Owl Known Occurrence
ILR	Spotted Owl Occurrence Area
Community & Other Identified Watersheds	Tailed Frog Known Occurrence
No Harvest (Parks & Protected Areas)	Tailed Frog Habitat
Wooded	Willamette's Sapsucker Known Occurrence
Community Forests	Willamette's Sapsucker WMA
Old Growth Management Area (OGMA)	Grizzly Bear WMA
<b>Special Interest</b>	Great Basin Spotted Owl WMA
Recreation Trails	Western Screech Owl WMA
Blue Trails	Levins Woodpecker WMA
Recreation Sites	Gopher Snake WMA
<b>Other Features</b>	Wildlife Habitat Special RMZ
Non-forested Areas	Candlish WMA (Data Series)
Forest Tenure Boundary	Candlish WMA
Mapnet Index	<b>Ungulate Winter Range</b>
Powerline	Moose Winter Range
Rail Road	Mountain Goat Winter Range
Pipeline	Mountain Goat Winter Range (500 m buffer)
	Deer Winter Range
	<b>Hydrography</b>
	Waterbodies
	Riparian Lake Class
	Lake Management Zones
	Streams and Rivers - TRIM data
	Fire Hearing
	Non-fire hearing

Note: Where coloured polygons overlap, colour may be slightly altered.



Forest Development Units



1:50,000

Projection: NAD83 UTM Zone 10N

Mapsheet generated as of July 7, 2017

Maps Prepared by: Aspen Planners Ltd.

E:\Aspen\_Arc\_Mapping\MXD\10\forest\Aspen\_Planners\_FSP.mxd